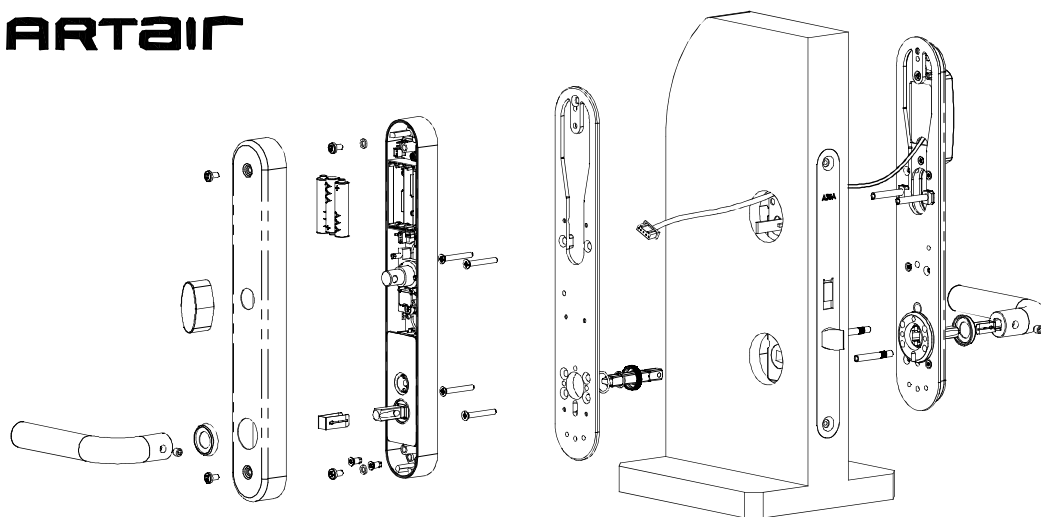


SMARTAIR SCANDINAVIAN RETROFIT

SMARTAIR



ISO 9001/
ISO 14001
CERTIFIED SYSTEM

MADE IN SPAIN

ASSEMBLING INSTRUCTIONS

1

Assemble the outer part of the electronic lock screwing it to the other mounting plate at the internal side of the door with four M4 screws. Insert the antenna cable through the door.

OPTIONAL:

To improve assembly performance an extra post can be used in upper hole (requires drill).

Simpler chance is to use just a self-tapping screw at the inside.

Insert the outer posts in appropriate screwed holes of the outer plate in accordance with the mortise lock's holes.

Choose the correct hand of the handle by pushing in this hole with a thin screwdriver.

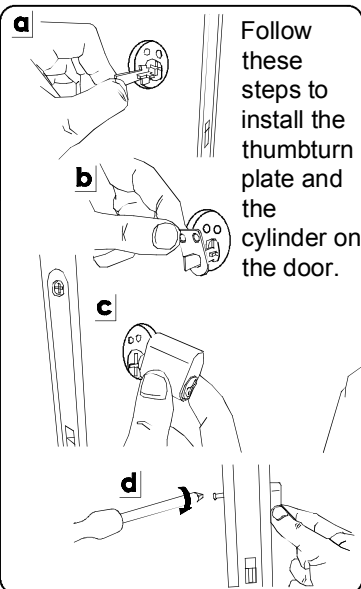
Assemble the outer handle following these four steps.



WATCH THE HAND!

2

Assemble the internal part of the electronic lock on the inner mounting plate.



Follow these steps to install the thumbturn plate and the cylinder on the door.

Screw the clutch in the inner part of the electronic lock keeping "up" label on top while inserting it in the outer part.

KEEP "UP" LABEL UPWARDS!

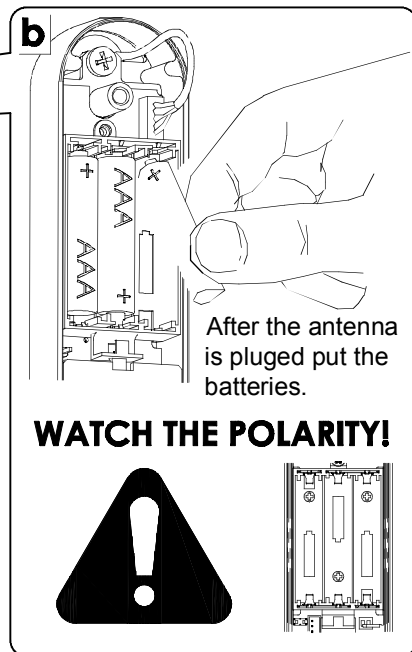
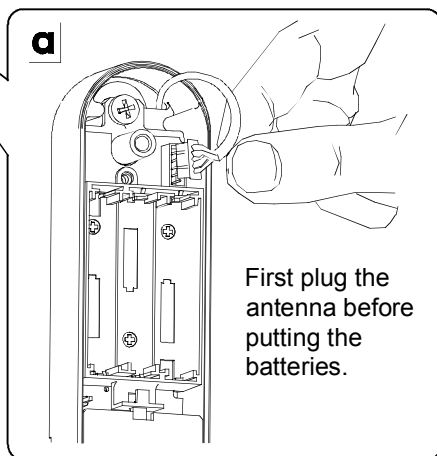
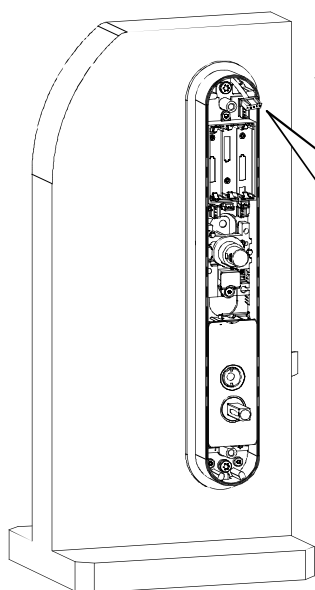
Use the two M4 L=8 mm trilobular screws.

NOTE: place the antenna cable carefully between the inner plate and the electronic scutcheon, and avoid pinching it.

Use the two M4 L=8 mm screws and the washers.

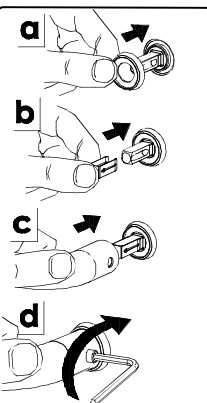
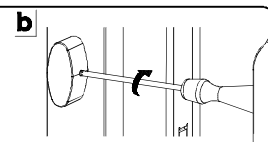
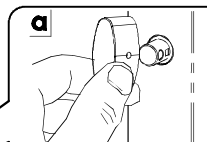
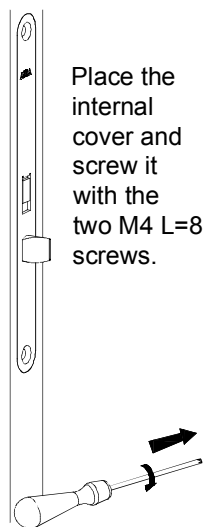
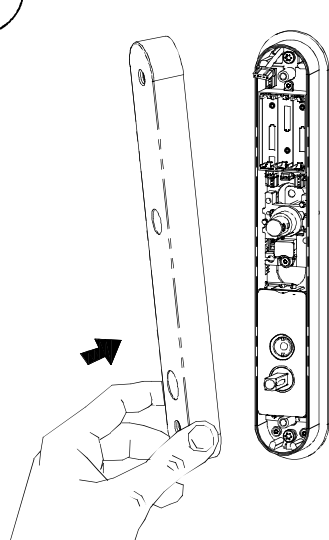
3

Connect the antenna plug an then put the 3xAAA batteries. Watch the polarity.

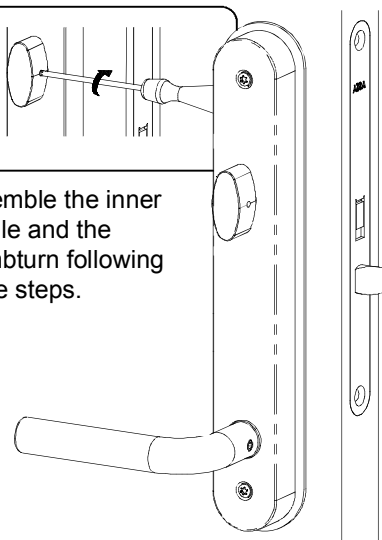


4

Put the internal cover, thumbturn and handle.



Assemble the inner handle and the thumbturn following these steps.



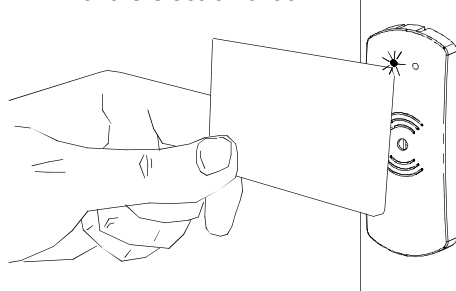
5

Check the lock.



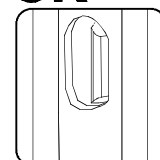
**DO NOT CLOSE THE DOOR.
FIRST CHECK THE CORRECT OPERATION OF THE LOCK!!**

Approach the card to the reader of the electronic lock.



OK

If green led is on, the latchbolt has to withdraw when turning the outer handle.



NOT OK

